



Ghent, 27 November 2013

STEP UP Conference

Covenant of Mayors - Realising the SEAP potential

Paolo Bertoldi, Giulia Melica
European Commission – Joint Research Centre



www.jrc.ec.europa.eu

*Serving society
Stimulating innovation
Supporting legislation*

Joint
Research
Centre





1. The Joint Research Centre and its role in the Covenant

2. Some figures on the initiative

**3. The SEAP process:
monitoring the implementation**

4. The STEP UP project: opportunities for enhanced SEAPs



1. The Joint Research Centre and its role in the Covenant

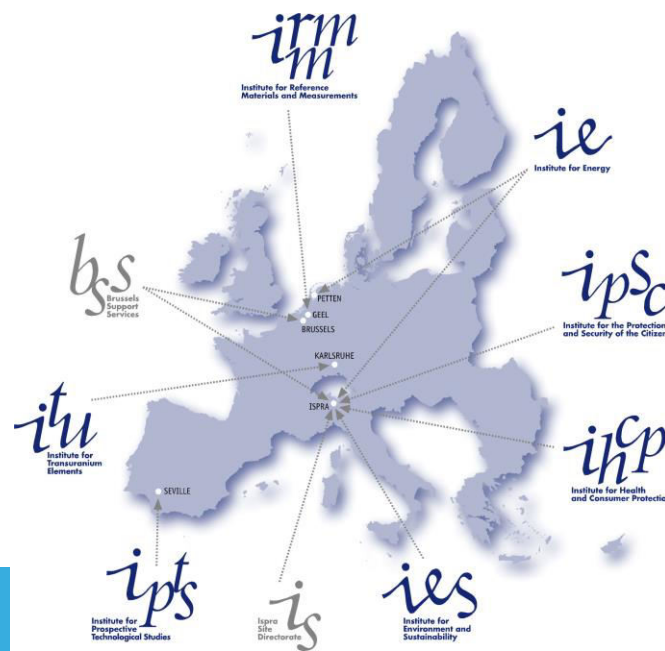


JRC - Robust Science for Policy Making

As a Directorate-General of the European Commission, the JRC provides customer-driven scientific and technical support to Community policy making



Supporting citizen's security, health and environmental protection, safety of food and chemicals, alternative energies, nuclear safety, econometrics, prospective technologies...





Scientific-technical support to the development, implementation and monitoring of the CoM

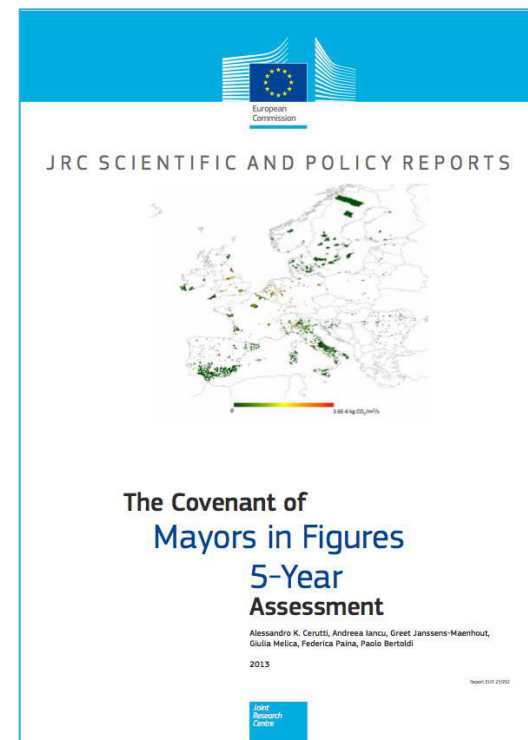
- Development of the guidebook “How to develop a Sustainable Energy Action Plan (SEAP)”
- Monitoring of the CoM implementation, including the development of a specific template & instructions for signatories
- Evaluation of submitted SEAPs, with feedback to Covenant cities
- Operation of the technical helpdesk service

The team: Paolo Bertoldi (IET), Alessandro Cerutti (IES), Krasimira Ganisheva (IES), Andreea Iancu (IES), Albana Kona (IET), Giulia Melica (IET), Silvia Rivas (IET), Paolo Zancanella (IET)

NB: In addition, the CoM Office in Brussels is in charge of: general coordination, promotion (website etc), networking, administrative support, technical helpdesk (with JRC), etc.

2. Some figures on the initiative

*based on a sample of 1287 SEAPs accepted by the JRC
as of June 2013*



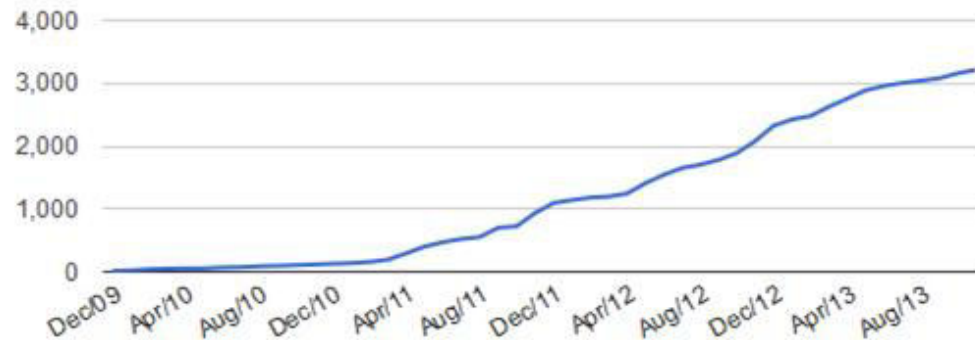
An unprecedented growth



Some figures from the initiative

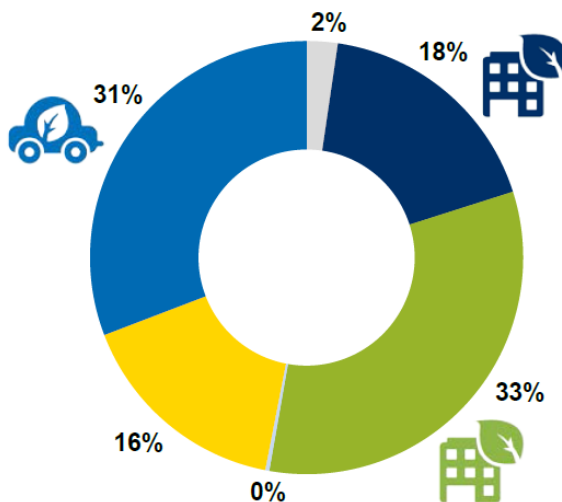
- 5342 Signatories
- 141 Coordinators
- 89 Supporters

SEAPs submitted over time

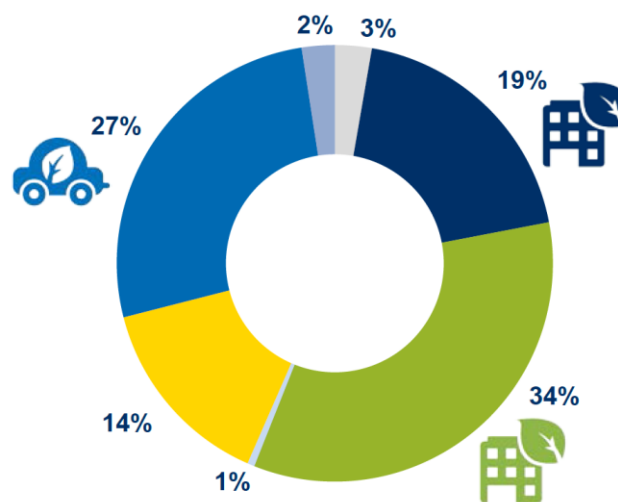


3209 SEAPs submitted as of today!

Breakdown of energy consumption and GHG emissions by sector



Final energy consumption



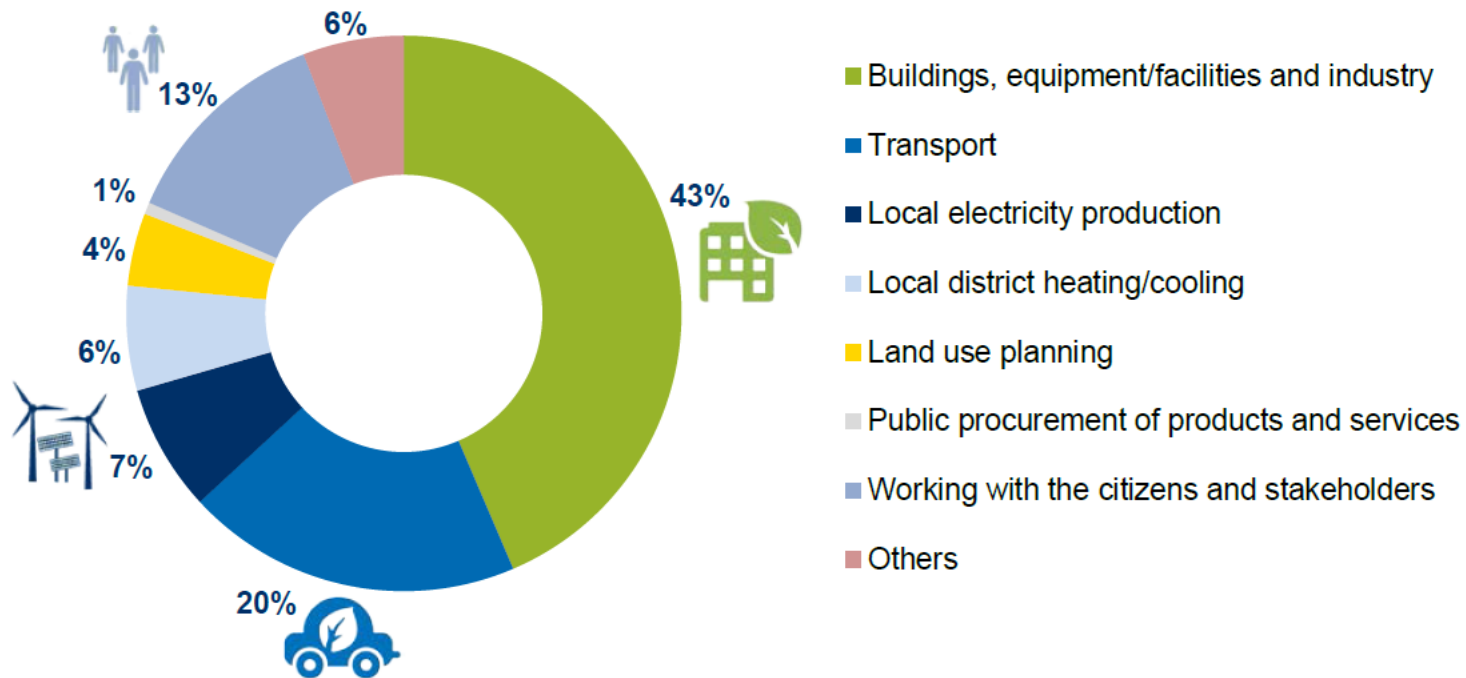
GHG emissions

- Municipal buildings, equipment/facilities
- Tertiary buildings, equipment/facilities
- Residential buildings
- Public lighting
- Industry
- Transport
- Others

A huge potential for emission savings



Breakdown of expected GHG emissions reduction by field of action in 2020



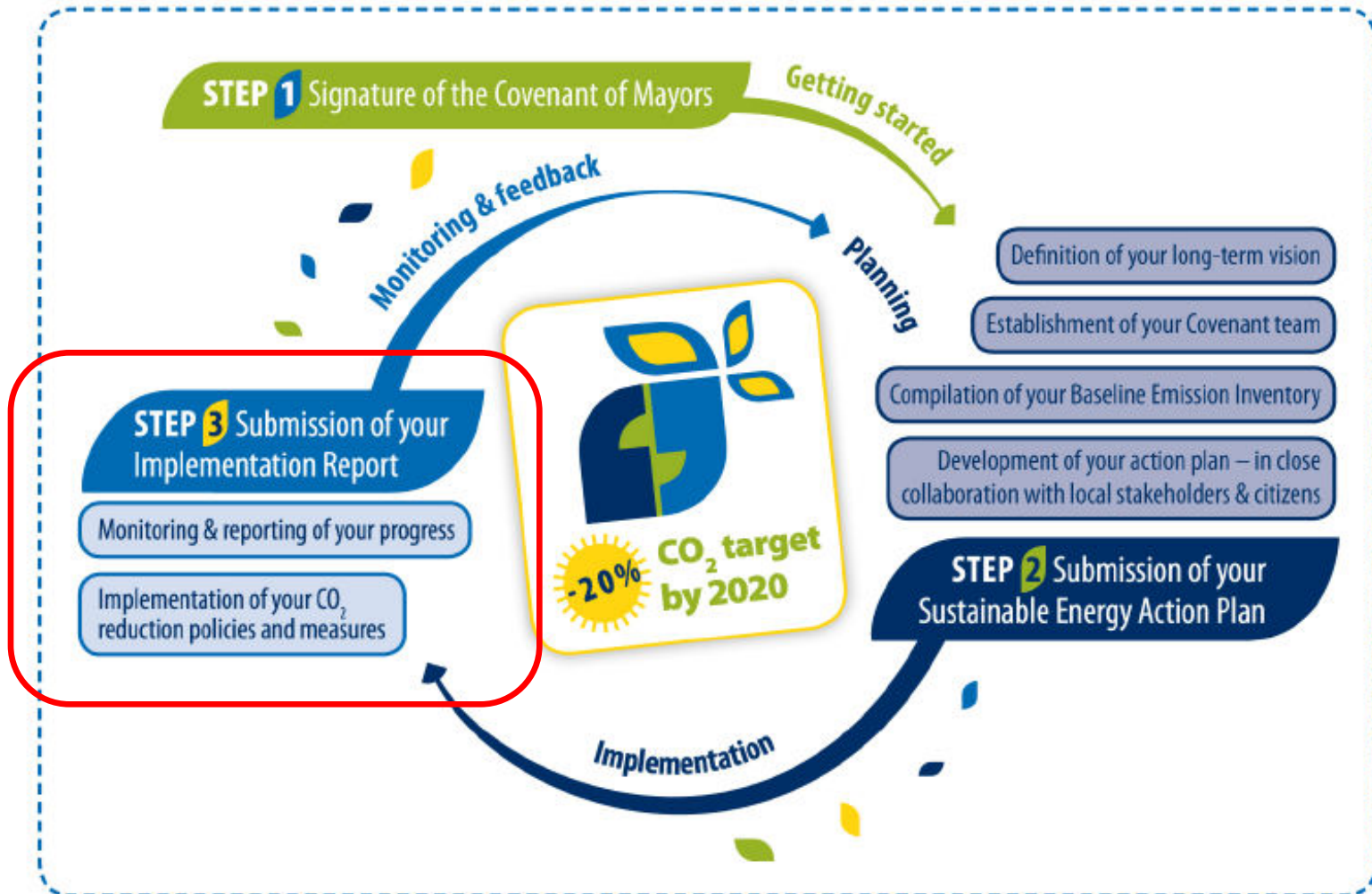


3. The SEAP process: monitoring the implementation

The Covenant step-by-step



The adherence to the CoM initiates a process within the local authority





We, the Mayors, commit to...

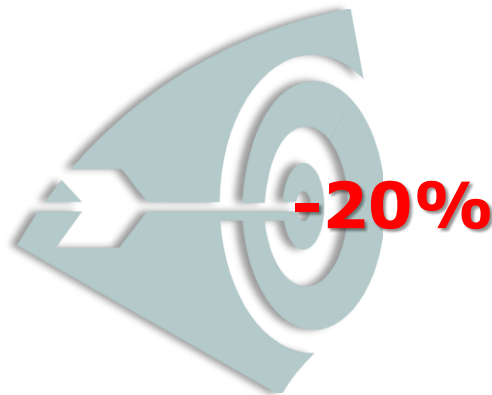
“Submit an **implementation report** at least **every second year** after submission of the Action Plan for evaluation, monitoring and verification purposes”.

(Covenant official text)

Why is monitoring important?

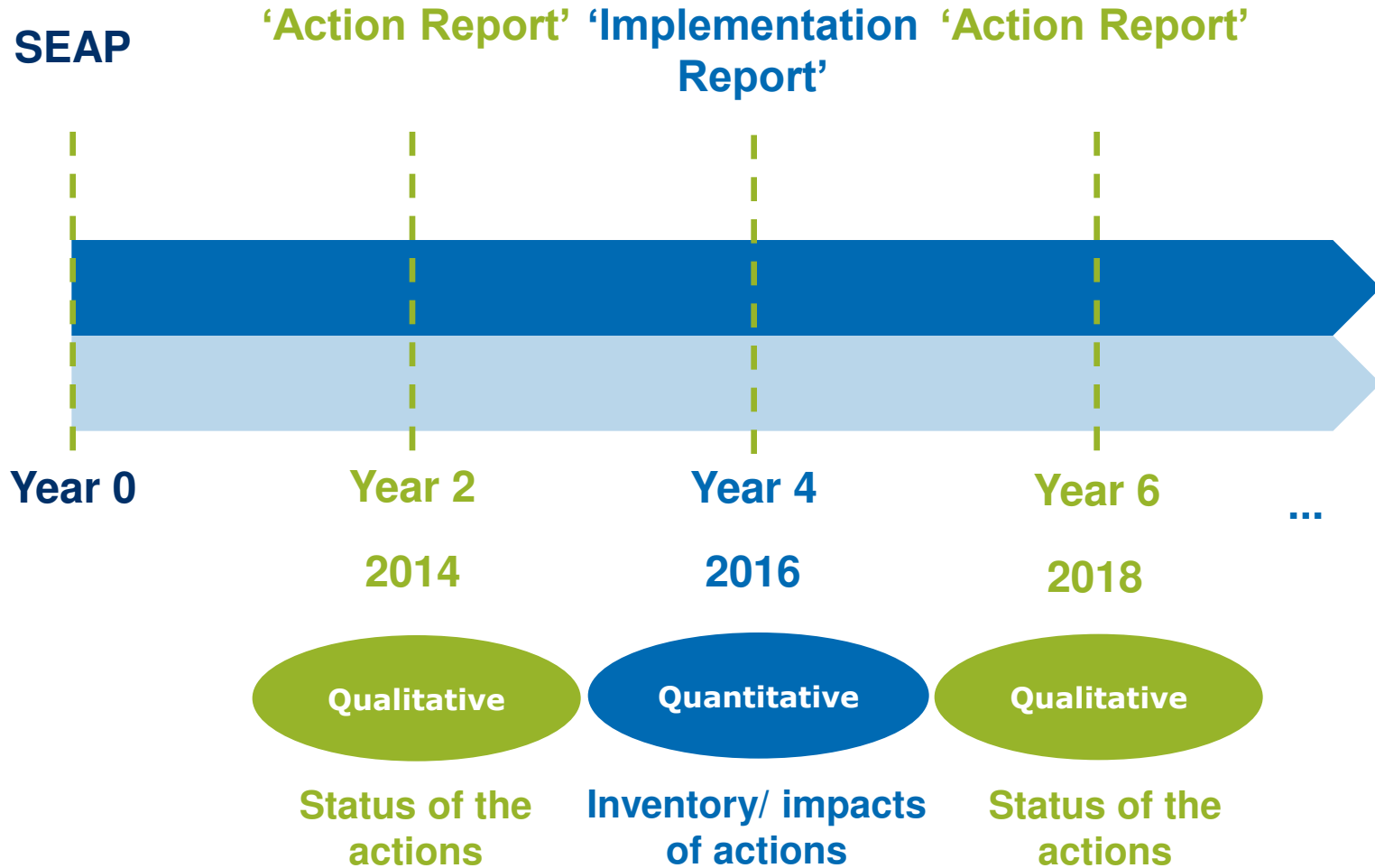


- To monitor how actions defined in SEAPs are progressing and evaluate their effects towards the targets
- To identify the need of adjustments to the plan, e.g. corrective measures
- To take new opportunities not initially foreseen, e.g. changes to the national/international context



Is the signatory on track to reach the target?

The CoM minimum requirements



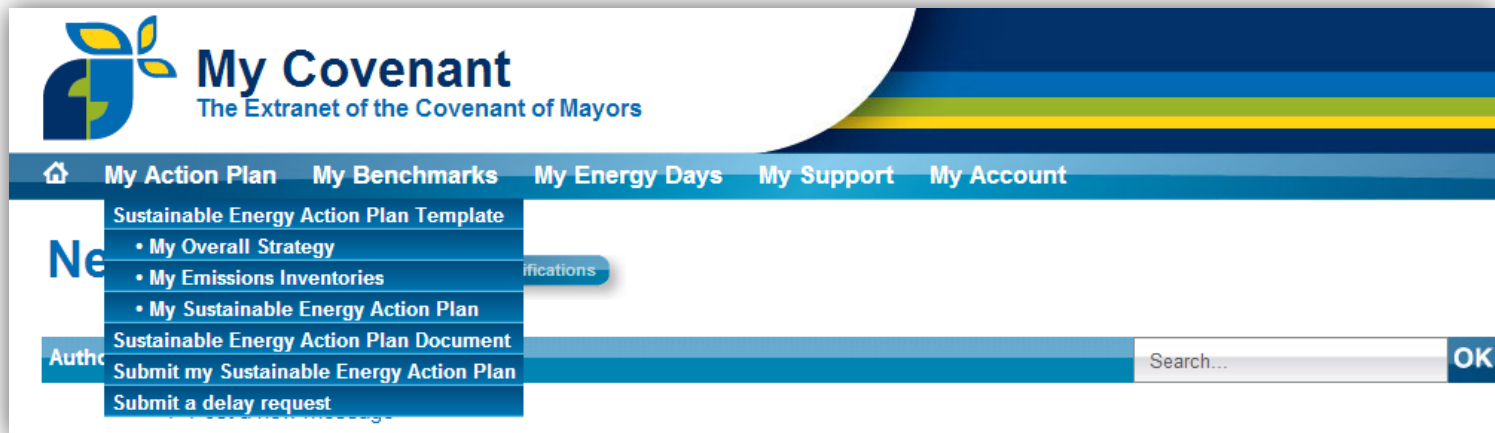
How to report to the Covenant?



➤ On-line Monitoring Template

The template has been developed by JRC and CoMO with the collaboration of a group of practitioners from local and regional authorities

- I. Update Overall Strategy
- II. Add Monitoring Emission Inventory (MEI)
- III. Report on the implementation status of the actions



New features in the monitoring template



The monitoring template will be pre-filled from the SEAP template. New fields will allow reporting on the implementation.

Overall Strategy section

- New fields to report on the **staff capacity allocated** and on the **budget spent** for SEAP implementation so far

4) Staff capacity allocated

SEAP preparation:	SEAP implementation:
<input type="checkbox"/> Local authority <input type="checkbox"/> Local/regional energy agency <input type="checkbox"/> External consultant <input type="checkbox"/> Covenant Territorial Coordinator <input type="checkbox"/> Other	<input checked="" type="checkbox"/> Local authority <input checked="" type="checkbox"/> Local/regional energy agency <input checked="" type="checkbox"/> External consultant <input checked="" type="checkbox"/> Covenant Territorial Coordinator <input checked="" type="checkbox"/> Other
<input type="text" value=""/> 500 chars left	

6) Overall budget for the implementation of your SEAP

<input checked="" type="checkbox"/> Local authority	<input type="text"/>	<u>Investment</u>	<input type="text"/>	<u>Investment</u>			
		<u>Non-investment</u>	<input type="text"/>	<u>Non-investment</u>			
<input checked="" type="checkbox"/> Other actors	<input type="text"/>	<u>Investment</u>	<input type="text"/>	<u>Investment</u>			
		<u>Non-investment</u>	<input type="text"/>	<u>Non-investment</u>			
Time period:	<input type="text"/>	<input type="text"/>	years	Time period:	<input type="text"/>	<input type="text"/>	years



Overall Strategy section

- Barriers to SEAP implementation

A dedicated section in the monitoring template will allow Signatories to rate the most recurrent **barriers faced by CoM signatories**, among:

- Limited financial sources
- Absence of / weak regulatory framework
- Lack of technical expertise
- Lack of support from stakeholders
- Lack of political support at other admin. levels
- Changes in the local political priorities
- Incompatibility with national policy orientations
- Immature or high cost of technologies



Benchmarks of excellence section

- To facilitate the exchange of best practices with fellow signatories and to identify **cost effective approaches**, each signatory is asked to provide **more detailed information** (e.g. impacts and/or key economic figures) on some completed or ongoing actions from the SEAP

Monitoring Synthesis report

- **Automatically generated** at the end of the monitoring stage
- Some **graphical elements** ease the follow-up of the SEAP implementation and **showcase the progress** already achieved



4. The STEP UP project: opportunities for enhanced SEAPs

The 4 partner Cities and their CoM objectives

Riga:

- 44% emission reduction by 2020

Ghent:

- 20% emission reduction by 2020
- Carbon neutral by 2050

Glasgow:

- 30% emission reduction by 2020

Gothenburg:

- 21% emission reduction by 2020
- <2 tons/capita by 2050

What we would like to see in signatories' territories in 2020

- Lower CO₂ emissions per capita (tCO₂ per capita/year) – possibly for each key Covenant sector
- Higher energy efficiency in buildings (kWh/m² year)
- Higher efficiency in transport (kWh/p km)
- Increased production of electricity and heat from renewable sources (MWh/year)
- Increased share of energy consumed in the territory coming from Local Energy production (%)
- Economic savings and local reinvestments
- Better opportunities for local jobs



Which opportunities for CoM signatories?



Energy efficiency directive (2012/27/EU)

*[...] Shifting to a more energy-efficient economy should also accelerate the spread of **innovative technological solutions** and **improve the competitiveness** of industry in the Union, boosting **economic growth** and creating **high quality jobs** in several sectors related to energy efficiency.*

Many of the measures described in the directive can help Covenant Signatories to identify new opportunities to meet their local targets and devise Smart solutions



Main measures

- Strategy to mobilise investment in the renovation of buildings [art. 4]
- Central government buildings: 3% of the total floor area to be renovated each year [art. 5]
- Promote energy audits and Energy Management Systems (EN ISO 50001) [art. 8]
- Smart meters [art. 9]
- Promotion of efficiency in district heating and cooling, CHP [art. 14]
- Demand response [art.15]
- Energy services [art.18]



From the CoM to Smart Cities

The CoM is a “platform” for sustainable energy and climate policy at local level: it encompasses the fundamental **governance challenges** and provides a methodological and scientific **framework for action**.

The CoM is the living laboratory of energy/climate policy at local level: **smart solutions** are already planned in several SEAPs

The Smart Cities initiative could help the CoM signatories to better devise, implement and integrate the most advanced low carbon solutions, allowing them to set **more ambitious objectives**.

Covenant is a basis for **systemic, integrated sustainable energy evolution**, while Smart cities can be a **part of the solution** to help this evolution materialize.



Thank you!

Paolo Bertoldi
+39 0332 78 9299
Paolo.BERTOLDI@ec.europa.eu

Giulia Melica
+39 0332 78 3587
Giulia.MELICA@ec.europa.eu

Joint Research Centre (JRC)
IET - Institute for Energy and Transport
Petten - The Netherlands & Ispra - Italy
<http://iet.jrc.ec.europa.eu/>
<http://www.jrc.ec.europa.eu>

